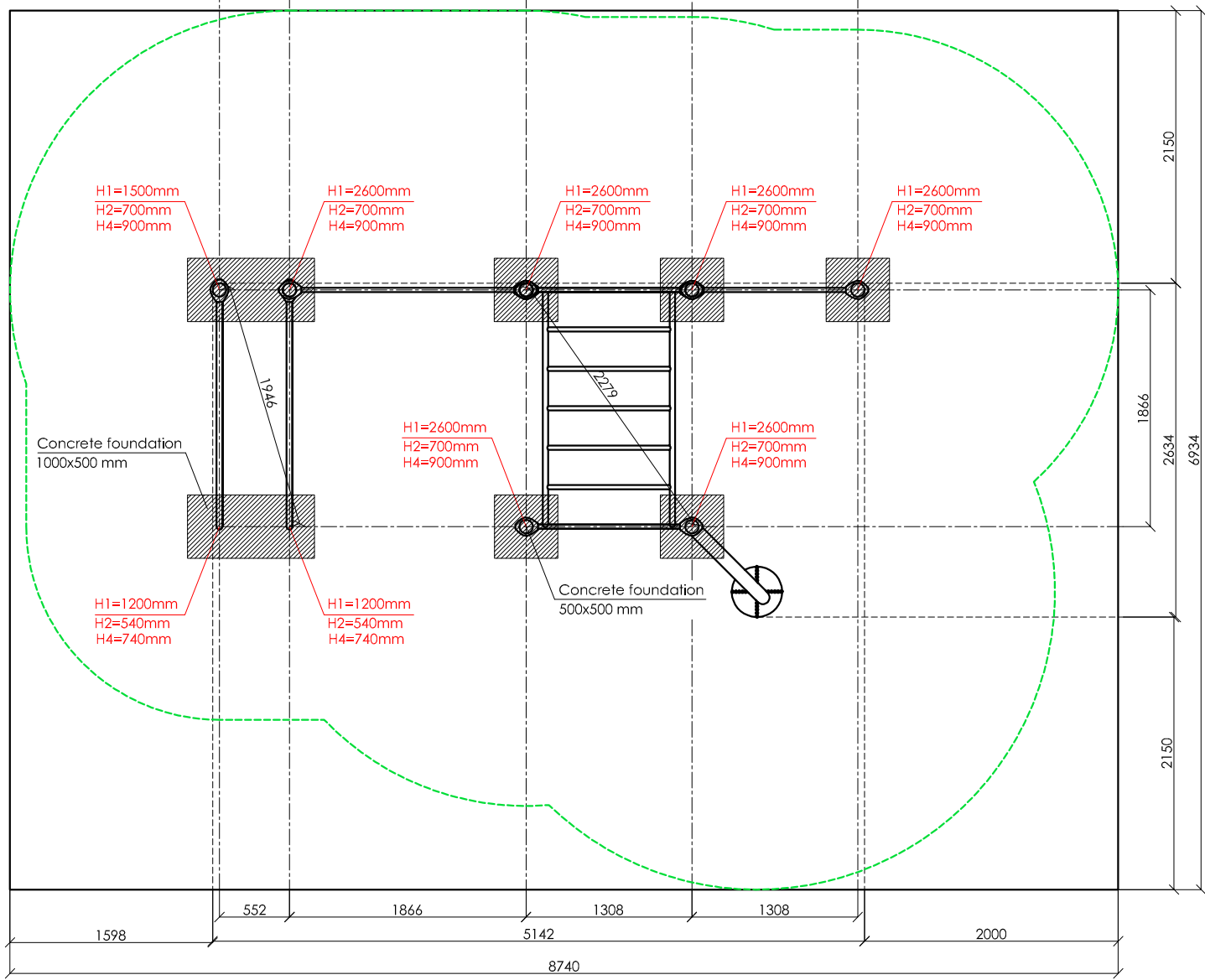
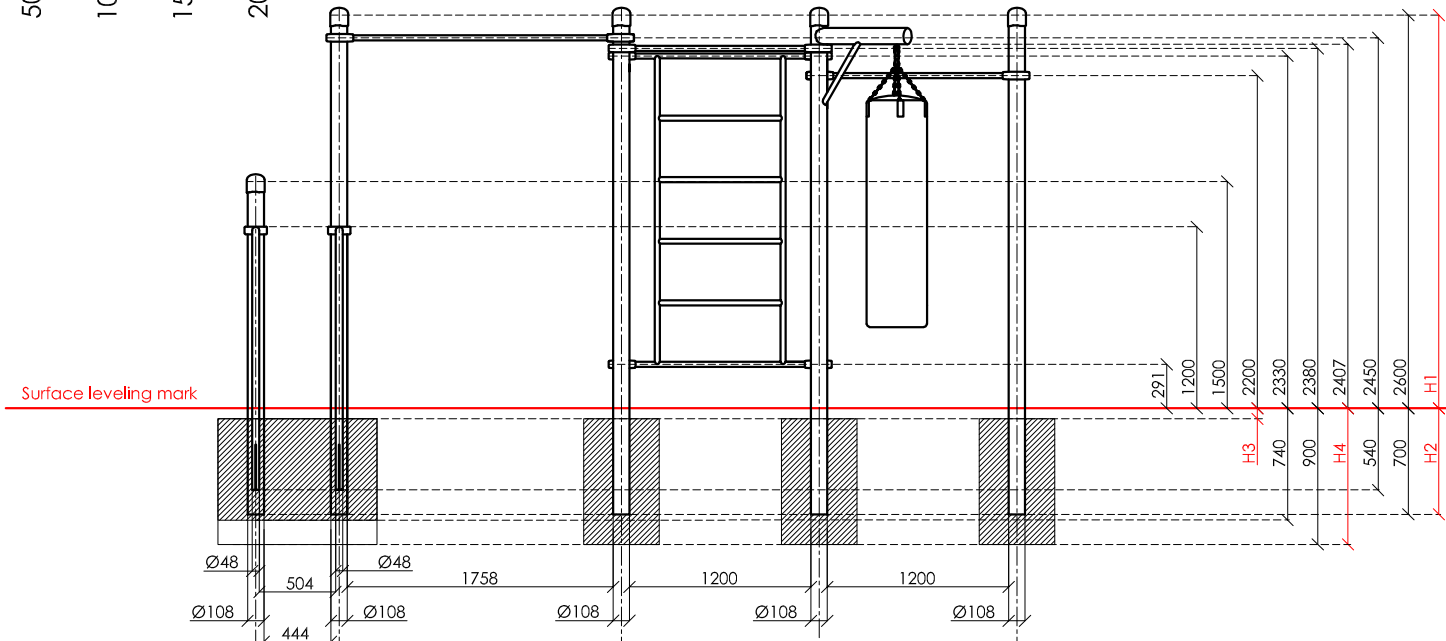
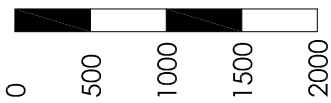


SCALE 1:50

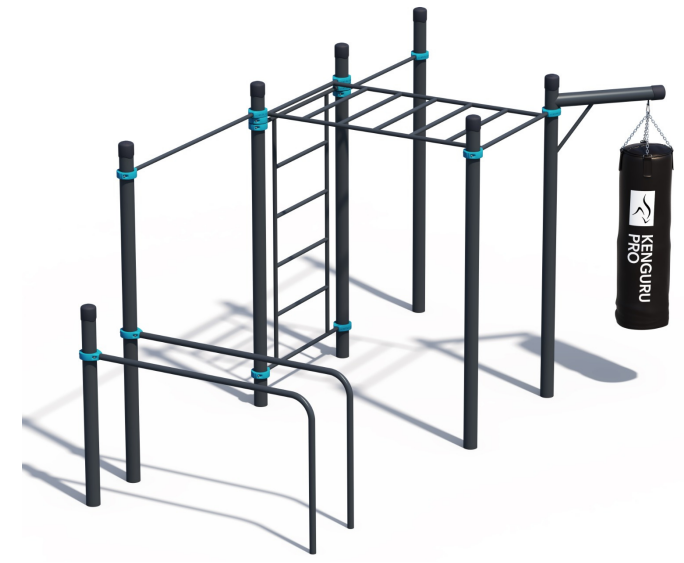


**KENGURU PRO**

**"KENGURU PRO" LTD**  
 Address: Lauteres street 4, Riga, Latvia, LV-1002  
 VAT Reg. No. 40103750152  
 Bank: A/S Luminor bank, SWIFT: RIKOLV2X ,  
 Bank Account: LV65RIKO0002930161161  
 e-mail: info@kengurupro.eu  
 www.kengurupro.eu

**K-044**

**Dalvik**



The complex consists of seven vertical columns of different height, two crossbars 1200 and 1758 mm in length, a pair of low parallel bars, a monkey bar and a Swedish wall. The complex includes a heavy boxing bag. Height of the Swedish wall – 2073 mm. The distance between the crossbars of the Swedish wall is 407 mm and the monkey bar – 311 mm. Construction is secured together with siluminium clamps. Weight 280.0 kg

**Installation instructions:**

- Choose a suitable underground for the unit (see page 2, table 2)!
- Prepare the construction pit with a drilling machine or other devices.
- Before pouring the concrete all structures elements must be leveled and fixed.
- Complex elements must be fixed and bolted together with metal clamps.
- Ready-made C25 concrete should be used.
- Crossbars installation height can be changed according to customer's wishes.
- Approximately 0,15m<sup>3</sup> concrete is needed for each spot foundation.
- Under the structures we recommend to install absorbing rubber cover.

The size of the hole for the foundation is depending on the consistency of the ground. The dimensions mentioned above are applicable for normal conditions with firm ground. If the ground is extremely soft, a much bigger foundation is needed. Use only appropriate material and follow the installation instructions closely!!!

Foundation plan and area of movement of the K-044 Dalvik				Technical information	
Foundation when using Shock absorbing underground (synthetic – rubber granulates)		Beveling of foundation when using loose filling material		width:	2634 mm
				height:	2650 mm
				length:	5142 mm
				largest part:	3350 mm
				weight:	280.0 kg
				floor space required	8740 x 6934 mm
<b>H3</b>	<b>Drop height</b>	<b>H3</b>	<b>Drop height</b>	pipe measurements:	diameter:
40 mm	> 1.2.....1.4 m	20 cm	< 1.0 m	108 mm	wall thickness:
50 mm	> 1.5.....1.7 m	30 cm	< 2.0 m	42.4 mm	3.2 mm
60 mm	> 1.8.....2.0 m	40 cm	< 3.0 m	33.7 mm	3.2 mm
70 mm	> 2.1.....2.5 m				
				metal parts:	steel, galvanized, powder coated RAL 7016 (anthracite grey)
				metal clamps:	siluminium, powder coated, RAL 5018 (turquoise blue)
				bolts for metal clamps	stainless steel, Pin Hex Button Head Security Screws M10
				max. free fall height:	< 2450 mm
				possible underground see	DIN 79000:2012-05
				user height:	> 140 cm
				maximum user weight:	130 kg
				certificates:	Tab.2 or installation instructions