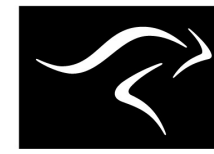
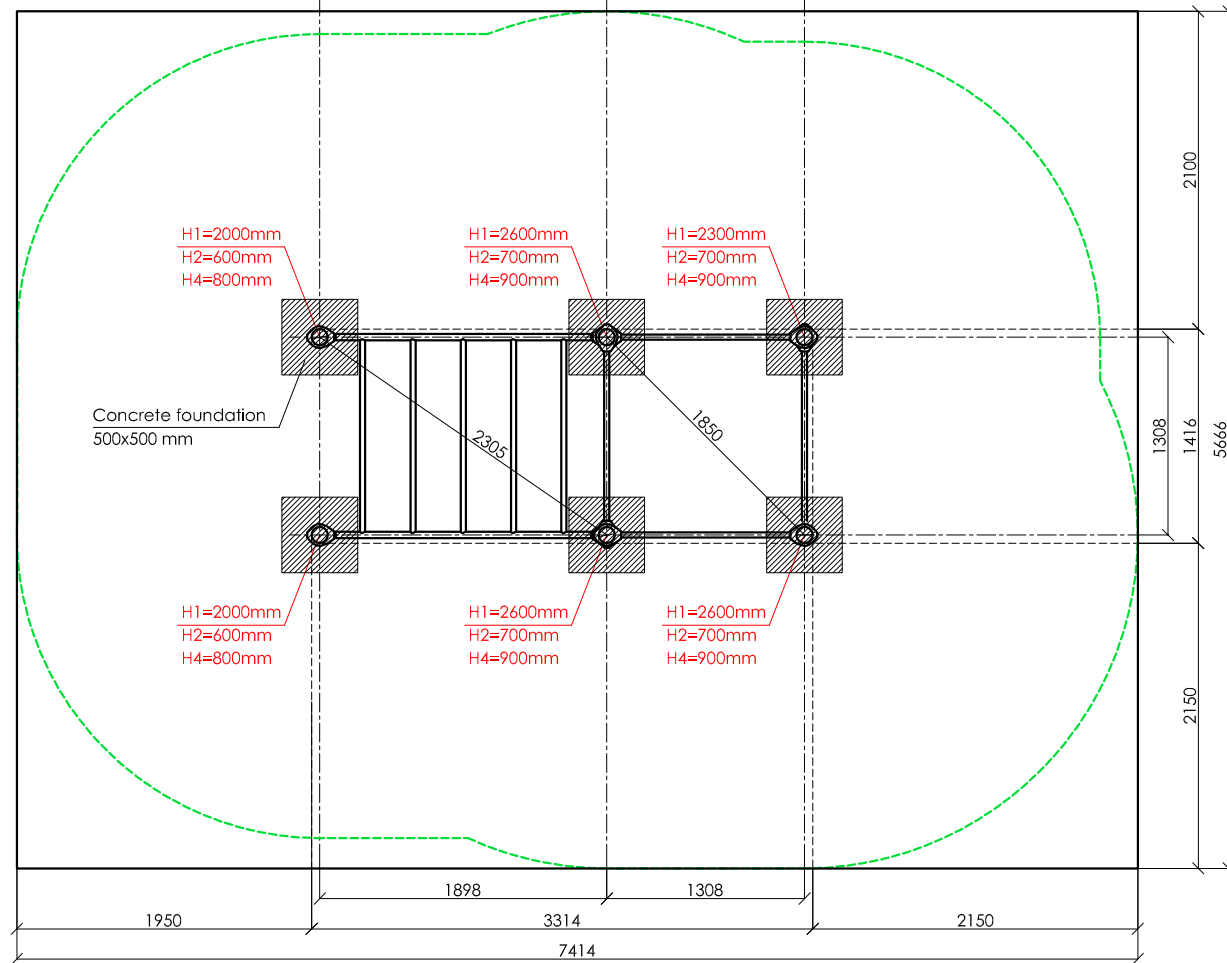
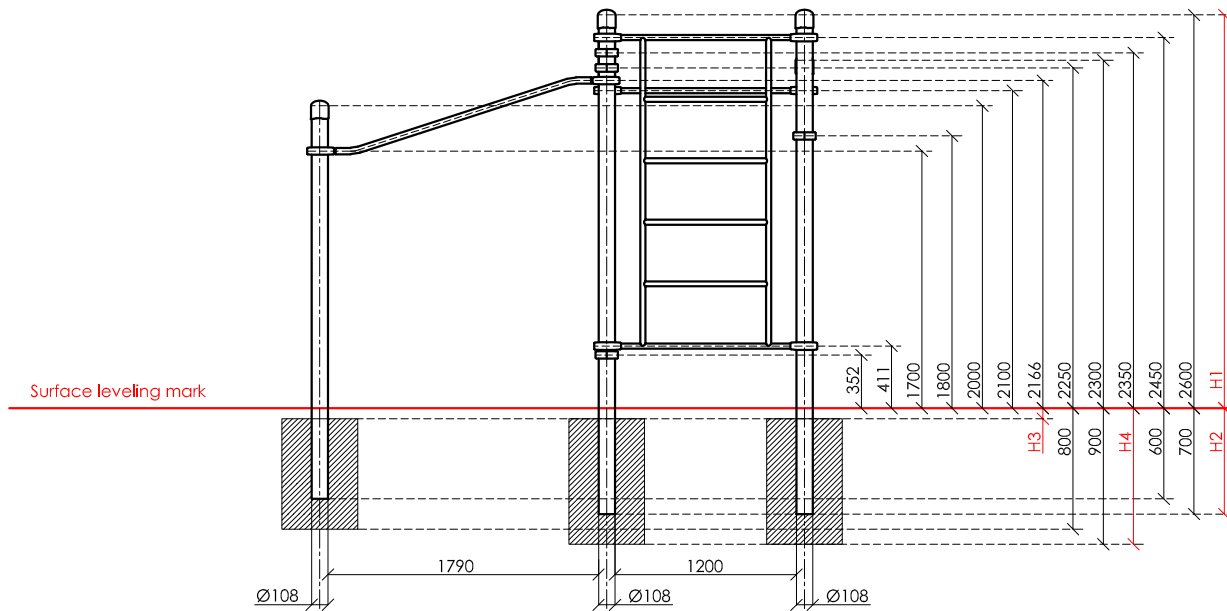
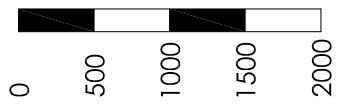


SCALE 1:50



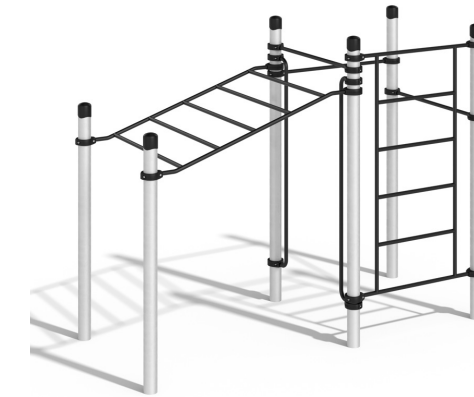
**KENGURU
PRO**

"KENGURU PRO" LTD

Address: Lauteres street 4, Riga, Latvia, LV-1002
 VAT Reg. No. 40103750152
 Bank: A/S Luminor bank, SWIFT: RIKOLV2X ,
 Bank Account: LV65RIKO0002930161161
 e-mail: info@kengurupro.eu
 www.kengurupro.eu

P-012

PARA Complex MIN



The complex consists of six vertical columns of different height, an inclined monkey bar section, a Swedish wall section, three crossbars 1200 mm in length and two climb-down bars 1932 mm in height. The length of the inclined monkey bar - 1790 mm. The distance between the crossbars of the inclined monkey bar is 350 mm. The difference between the lowest and highest point of the inclined monkey bar is 466.3 mm. The structure is secured together with siluminium clamps. Weight - 169.4 kg.

Installation instructions:

- Choose a suitable underground for the unit (see page 2, table 2)!
- Prepare the construction pit with a drilling machine or other devices.
- Before pouring the concrete all structures elements must be leveled and fixed.
- Complex elements must be fixed and bolted together with metal clamps.
- Ready-made C25 concrete should be used.
- Crossbars installation height can be changed according to customer's wishes.
- Approximately 0,15m³ concrete is needed for each spot foundation.
- Under the structures we recommend to install absorbing rubber cover.

The size of the hole for the foundation is depending on the consistency of the ground. The dimensions mentioned above are applicable for normal conditions with firm ground. If the ground is extremely soft, a much bigger foundation is needed. Use only appropriate material and follow the installation instructions closely!!!

Foundation plan and area of movement of the P-012 PARA Complex MIN

Foundation when using Shock absorbing underground (synthetic - rubber granulates)		Beveling of foundation when using loose filling material		Technical information		
H3	Drop height	H3	Drop height	width:	1416 mm	
40 mm	> 1.2.....1.4 m	20 cm	< 1.0 m	height:	2650 mm	
50 mm	> 1.5.....1.7 m	30 cm	< 2.0 m	length:	3314 mm	
60 mm	> 1.8.....2.0 m	40 cm	< 3.0 m	largest part:	3350 mm	
70 mm	> 2.1.....2.5 m			weight:	169.4 kg	
				floor space required	7414 x 5666 mm	
				pipe measurements:	diameter:	108 mm
					wall thickness:	3.0 mm
						42.4 mm
						33.7 mm
				columns Ø108mm:	anodized profiled aluminium tube AW6060 (Silver color)	
				elements:	stainless steel AISI 304, brushed surface	
				metal clamps:	siluminium, powder coated, RAL 9005 (pure black)	
				bolts for metal clamps	stainless steel, Pin Hex Button Head Security bolts M10	
				max. free fall height:	< 2450 mm	possible underground see DIN 79000:2012-05 Tab.2 or installation instructions
				user height:	> 140 cm	
				maximum user weight:	130 kg	
				certificates:	TÜV Rheinland InterCert Kft.	

